

# AUTOVUE VUELINK INTEGRATION FOR ENOVIA MATRIXONE

## KEY FEATURES AND BENEFITS

### KEY FEATURES

- Native document viewing
- Hundreds of supported formats
- Real-time collaboration
- Browse-and-search function
- Document comparison
- Digital mockup
- Cross-probing
- Measurements
- Markups, annotations, and comments saved as distinct overlays
- Master markup
- Consolidated markup
- Read-only markup
- Regular markup
- Renditions generation
- Support for distributed file collaboration servers (eFCS)

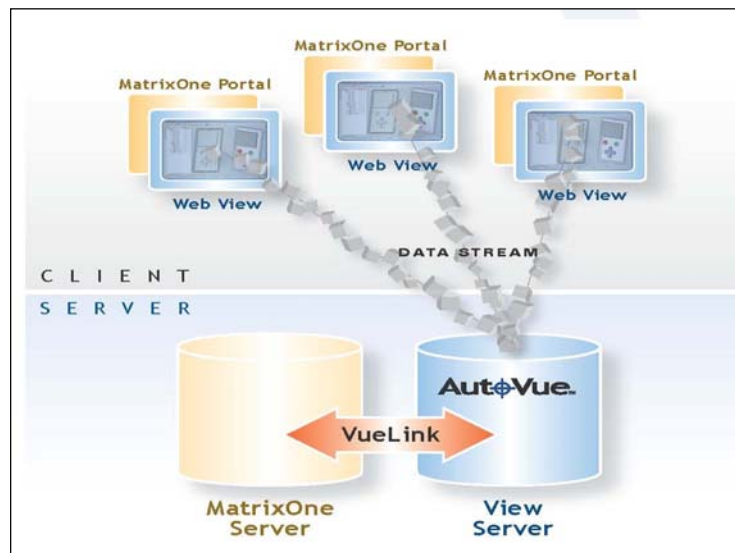
### KEY BENEFITS

- Standardize processes with a single solution that supports hundreds of document formats
- Leverage ENOVIA MatrixOne product lifecycle management solutions
- Enhance collaboration and improve the way information is communicated
- Maintain document integrity and set a higher level of document security
- Reduce costs related to the purchase of expensive software applications

*Oracle's Vuelink Integration for ENOVIA MatrixOne helps connect information, documents, and people throughout the global enterprise by combining the powerful native document viewing and real-time collaboration capabilities of Oracle's AutoVue enterprise visualization products with ENOVIA MatrixOne's structured product lifecycle management. Together, Oracle's enterprise visualization products and ENOVIA MatrixOne deliver a robust set of capabilities that help enterprises leverage product data throughout the product lifecycle, adopt collaborative best practices, and drive high-quality products to market faster and at a lower cost.*

### Extend the Value of Your ENOVIA MatrixOne Investment

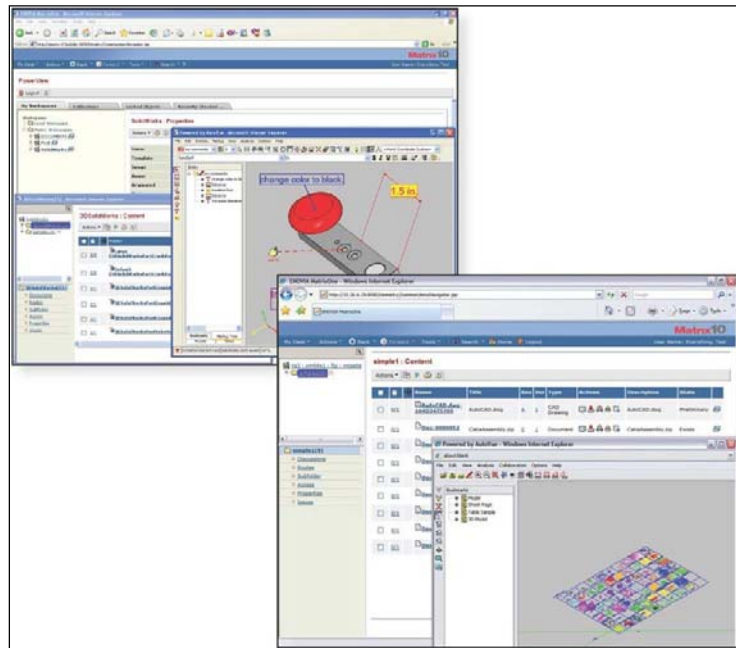
ENOVIA MatrixOne is a comprehensive solution for managing product development from concept to completion. AutoVue enterprise visualization products enable users to view, mark up, and collaborate on documents without requiring the authoring applications and without altering the original document. AutoVue Vuelink Integration for ENOVIA MatrixOne bridges these two solutions so organizations can leverage product data throughout the product lifecycle and streamline collaboration with internal teams, suppliers, and partners—regardless of their software environment—while also protecting valuable intellectual property.



**Figure 1: Integration at the server level allows users to instantly access documents stored in ENOVIA MatrixOne for viewing, printing, markup, and real-time collaboration. Original documents are never transferred to the client computer, so intellectual property is secure.**

### Open and View Hundreds of Document Types

With hundreds of supported file formats, including 2-D computer-aided design (CAD) drawings, 3-D models, printed circuit board layouts and schematics, and Microsoft Office documents, AutoVue enterprise visualization products allow users to access, view, and review virtually any type of document. By leveraging a single solution, the cost of purchasing, managing, and training employees to use multiple viewing and authoring applications is eliminated.



**Figure 2: View hundreds of document types in their native format and avoid common file conversion errors—all from directly within your ENOVIA MatrixOne environment.**

### Access Data Natively

By handling data natively, AutoVue enterprise visualization products allow users to open, view, and review original documents without undergoing costly and error-prone conversions. Because file conversion is not required, the tedious task of creating and managing a double set of data is eliminated. Users can be confident that they are always working with the latest version of a file, and that business decisions are based on original native documents.

### Find Documents Quickly

AutoVue VueLink Integration for ENOVIA MatrixOne leverages ENOVIA MatrixOne's browse-and-search capability for easier project collaboration. Information and data stored in the ENOVIA MatrixOne repository can be easily retrieved and viewed. All markups and annotations are created as distinct overlays on top of the original file and saved directly into the ENOVIA MatrixOne server. Reviewers can then review all the markups and annotations associated with that document, and turn markup layers on and off as needed, selecting only those that they want to view.

## RELATED PRODUCTS

### ORACLE'S AUTOVUE ENTERPRISE VISUALIZATION PRODUCTS

Increase productivity, achieve faster time to market, and eliminate the cost associated with multiple server-side and client-side viewers. Through a standard browser interface, Oracle's enterprise visualization products enable users to view, annotate, and collaborate on documents that originate from more than 450 different formats without requiring the authoring application. Oracle provides AutoVue VueLink integrations for Oracle Universal Content Management, ENOVIA MatrixOne, Microsoft SharePoint, Documentum, and SAP Product Lifecycle Management.

### RELATED PRODUCTS

- AutoVue Office
- AutoVue 2D Professional
- AutoVue 3D Professional Advanced
- AutoVue EDA Professional
- AutoVue Electro-Mechanical Professional

### Streamline Vital Collaboration Workflows

AutoVue enterprise visualization products provide a rich set of markup entities allowing users to communicate feedback, change requests, and instructions effectively. All markups and annotations are created as distinct overlays on top of the original file and saved directly into the ENOVIA MatrixOne repository.

Reviewers can then turn markup layers on and off as needed, selecting only those that they want to view. AutoVue VueLink Integration for ENOVIA MatrixOne provides the ability to automatically pull out the source file associated with a specific markup, eliminating the burden of finding the location of the base file in the ENOVIA MatrixOne repository.

### Leverage ENOVIA MatrixOne Online Meeting Capabilities

The real-time collaboration capabilities in AutoVue enterprise visualization products enable team members to initiate synchronous workgroup collaboration sessions from the ENOVIA MatrixOne environment and instantly exchange views and ideas in the context of the design. Markups and chat are captured as part of the online sessions for future reference. Collaboration is improved and information and ideas can be communicated in an efficient and secure manner across the global enterprise.

### Increase Security

AutoVue enterprise visualization products' unique streaming technology ensures that the original document, with its proprietary data, is never transferred to the client side for viewing or markup. Thus, teams can efficiently work, collaborate, and share documents internally, as well as with suppliers and outsourcing partners, via the ENOVIA MatrixOne environment without jeopardizing the security of their company's intellectual property.

### Contact Us

For more information about Oracle's AutoVue VueLink Integration for ENOVIA MatrixOne, please visit [oracle.com/applications/autovue](http://oracle.com/applications/autovue) or call +1.800.361.1904 or +1.514.735.3219 to speak to an Oracle representative.

Copyright © 2008, Oracle and/or its affiliates. All rights reserved.

This document is provided for information purposes only, and the contents hereof are subject to change without notice. This document is not warranted to be error-free, nor is it subject to any other warranties or conditions, whether expressed orally or implied in law, including implied warranties and conditions of merchantability or fitness for a particular purpose. We specifically disclaim any liability with respect to this document, and no contractual obligations are formed either directly or indirectly by this document. This document may not be reproduced or transmitted in any form or by any means, electronic or mechanical, for any purpose, without our prior written permission.

Oracle is a registered trademark of Oracle Corporation and/or its affiliates. Other names may be trademarks of their respective owners.



2, Rue Galilée  
78280 GUYANCOURT  
Tél. 01.39.30.65.06  
Fax. 01.39.30.65.08  
[www.cadvision.fr](http://www.cadvision.fr)