

# AUTOVUE VUELINK INTEGRATION FOR SHAREPOINT

## KEY FEATURES AND BENEFITS

### KEY FEATURES

- Native document viewing
- Hundreds of supported formats
- Support for xrefs checked in from a CAD integration or any file system
- Real-time collaboration
- Browse-and-search function
- Document comparison
- Compliance with SharePoint version control and document approval functionalities
- Digital mockup
- Precise measurements
- Markups, annotations, and comments saved as distinct overlays
- TIFF rendition generation
- Metadata integration
- Enforcement of existing SharePoint security

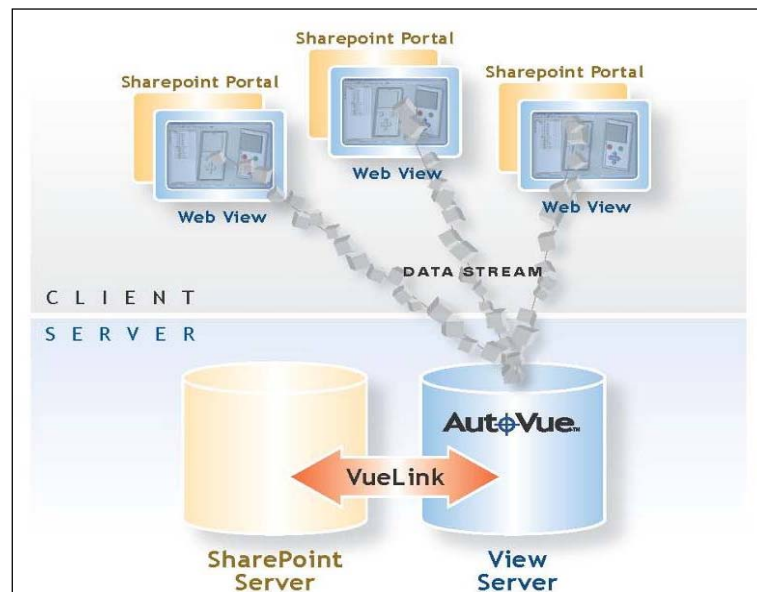
### KEY BENEFITS

- View CAD and engineering files within SharePoint
- Extend SharePoint collaboration capabilities
- Standardize processes with a single solution that supports hundreds of document formats
- Improve project communication and document review processes
- Maintain document integrity and ensure a higher level of security
- Reduce costs related to the purchase of expensive software applications
- Provide greater project visibility with support for CAD integrations

*Oracle's AutoVue VueLink Integration for SharePoint adds the powerful and user-friendly native document visualization capabilities of Oracle's AutoVue enterprise visualization products to the Microsoft SharePoint platform and includes support for computer-aided design (CAD) integration solutions. Together, these applications create an effective collaboration platform that makes crucial project information accessible to specialists and nonCAD users throughout the project lifecycle, facilitating document review, empowering teams to make informed decisions, and improving internal and external teamwork.*

### Extend the Value of Your SharePoint Investment

SharePoint provides content management for all business information. AutoVue enterprise visualization products enable users to view, annotate, and collaborate on documents without requiring the authoring applications and without altering the original document. AutoVue VueLink Integration for SharePoint unites these two solutions so that users can efficiently and cost-effectively open, view, and review any document directly from within the SharePoint environment.



**Figure 1: Integration occurs at the server level allowing users to instantly access documents stored in SharePoint for viewing, printing, markup and real-time collaboration.**

### Open and View Hundreds of Document Types

With hundreds of supported file formats, including 2-D computer-aided design (CAD) drawings, 3-D models, printed circuit board layouts and schematics, and Microsoft Office documents, AutoVue enterprise visualization products allow users to access, view, and review hundreds of document types. By leveraging a single solution, the cost of purchasing, managing, and training employees to use multiple viewing and authoring applications is eliminated.

### Access Data Natively

By handling data natively, AutoVue enterprise visualization products allow users to open, view, and review original documents without undergoing costly and error-prone conversions. Because file conversion is not required, the cost and complexity of maintaining multiple client-side viewers and server-side conversion systems is eliminated, along with the tedious task of maintaining a double set of data such as the original document and the converted/neutral file. Users can be confident that they are always working with the latest version of a file, and that business decisions are based on original native documents.

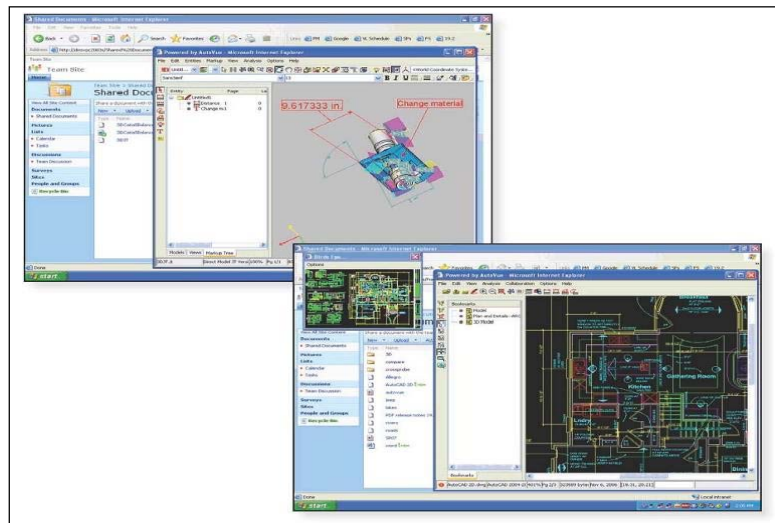


Figure 2: View native documents directly from within SharePoint.

### Find Documents Quickly

AutoVue VueLink Integration for SharePoint provides browse-and-search functions that enable team members to quickly access and view files stored in SharePoint directly from AutoVue enterprise visualization applications.

### View CAD Data stored in SharePoint

AutoVue is the only thin-client, Web-based visualization solution providing engineers and nonCAD users with instant access to CAD data directly from SharePoint. AutoVue VueLink Integration for SharePoint delivers improved engineering project visibility by providing support for CAD integration solutions, such as Organice and Bentley ProjectWise. Users can view, review, and collaborate on 2-D CAD drawings, such as AutoCAD or MicroStation, directly from within SharePoint, and AutoVue will accurately display the drawings, including all associated external reference files (xrefs).

**RELATED PRODUCTS**ORACLE'S AUTOVUE  
ENTERPRISE  
VISUALIZATION  
PRODUCTS

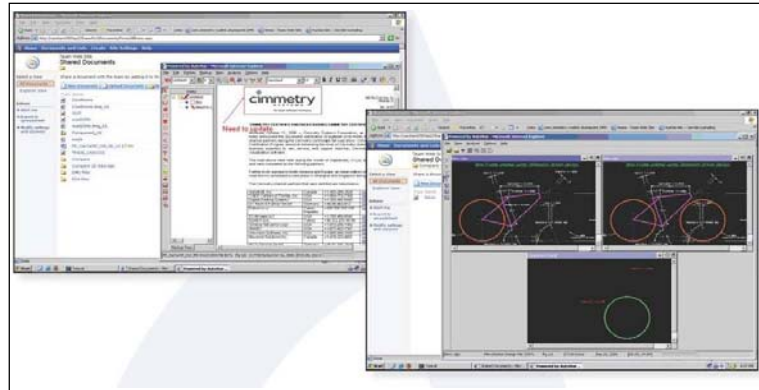
Increase productivity, achieve faster time to market, and eliminate the cost associated with multiple server-side and client-side viewers. Through a standard browser interface, Oracle's enterprise visualization products enable users to view, annotate, and collaborate on documents that originate from more than 450 different formats without requiring the authoring application. Oracle provides AutoVue VueLink integrations for Oracle Universal Content Management, ENOVIA MatrixOne, Microsoft SharePoint, Documentum, and SAP Product Lifecycle Management.

## RELATED PRODUCTS

- AutoVue Office
- AutoVue 2D Professional
- AutoVue 3D Professional Advanced
- AutoVue EDA Professional
- AutoVue Electro-Mechanical Professional

**Share Information and Collaborate Efficiently**

The real-time collaboration features in Oracle's enterprise visualization products foster teamwork throughout the project lifecycle by connecting everyone in the global enterprise. Team members, suppliers, partners, and customers can instantly and remotely access, view, and mark up any document and share information regardless of geographical location, technical skills, or the applications they use.



**Figure 3: Improve efficiency with information sharing and collaboration.**

**Increase Security**

AutoVue enterprise visualization products deliver instant and secure access to original documents without leaving a document footprint on the client's machine. AutoVue VueLink Integration for SharePoint is structured so that the original document, with its proprietary data, is never transferred to the client machine. Only a rendering of a document is transmitted to the client for viewing and markup, thereby safeguarding valuable intellectual property. All markups and annotations are directly saved into SharePoint as a different layer so that the integrity of the original document is maintained.

**Contact Us**

For more information about Oracle's AutoVue VueLink Integration for SharePoint, please visit [oracle.com/applications/autovue](http://oracle.com/applications/autovue) or call +1.800.361.1904 or +1.514.735.3219 to speak to an Oracle representative.

Copyright © 2008, Oracle and/or its affiliates. All rights reserved.

This document is provided for information purposes only, and the contents hereof are subject to change without notice. This document is not warranted to be error-free, nor is it subject to any other warranties or conditions, whether expressed orally or implied in law, including implied warranties and conditions of merchantability or fitness for a particular purpose. We specifically disclaim any liability with respect to this document, and no contractual obligations are formed either directly or indirectly by this document. This document may not be reproduced or transmitted in any form or by any means, electronic or mechanical, for any purpose, without our prior written permission.

Oracle is a registered trademark of Oracle Corporation and/or its affiliates. Other names may be trademarks of their respective owners.



2, Rue Galilée  
78280 GUYANCOURT  
Tél. 01.39.30.65.06  
Fax. 01.39.30.65.08  
[www.cadvision.fr](http://www.cadvision.fr)