

AUTOVUE MOBILE

KEY FEATURES AND BENEFITS

KEY FEATURES

- Delivers powerful external collaboration capabilities
- Supports offline and in-context collaboration
- Creates easy-to-share Mobile Packs
- Adds file encryption and password-protection to Mobile Packs and markups
- Displays dynamic back-office system attributes even when working offline
- Saves markups and comments in the Mobile Packs
- Updates inbound markups, annotations and back-office attributes values back into the enterprise system

KEY BENEFITS

- Drive innovation through efficient supply chain collaboration
- Accelerate time-to-market by fully integrating partners into workflow processes
- Improve market responsiveness by enabling an information-driven supply chain
- Collaborate without risking intellectual property
- Enable network-friendly sharing of CAD data
- Extend the reach of documents and information to disconnected users

Oracle's AutoVue Mobile complements AutoVue's powerful native document viewing, digital annotation and real-time collaboration capabilities, enabling global organizations to extend the reach of technical information and business processes to disconnected users within and outside an organization. Through the sharing of Mobile Packs, AutoVue Mobile significantly improves how teams interact with information and one another, increasing everyone's visibility of key technical data, and providing insight into the context surrounding the documents. Teams can collaborate more effectively and securely with global supply chain partners, allowing them to meet the rigorous demands of product development and achieve competitive advantage.

Capitalize on a Collaborative Supply Chain Strategy

Off shore manufacturing has become a reality for global organizations, forcing them to seek ways to securely and effectively collaborate with their global supply chain partners. These efforts are often hampered by the proliferation of digital information and the use of disparate CAD applications and enterprise systems amongst partners and manufacturers. AutoVue Mobile helps global manufacturers solve document interoperability and security challenges that often hinder supply chain collaboration.

AutoVue Mobile provides a simple and secure mechanism that allows teams to share design and product information with supply chain partners. The latter have access to key information, as well as the entire history of comments, changes and decisions related to the documents, providing them with insight into the context surrounding the files. Partners can rely on this information to make sound business decisions and provide constructive feedback using AutoVue's digital markup functions, and return their comments to the sender; organizations can integrate partners into their business workflows and processes.

Drive Efficient Supply Chain Collaboration

With AutoVue Mobile, team members can either collaborate in real-time via the Web, or in an off-line manner through the creation of "Mobile Packs".

AutoVue Mobile works in four easy steps:

- **Create a Mobile Pack** – When creating an AutoVue Mobile Pack, users can include:
 - AutoVue streaming files or native files
 - Any related external reference files (x-refs)

- Associated AutoVue Markups
- Attributes from back-office systems, such as document status or approval date

Users can also choose to include TIFF or PDF renditions, a common requirement for ISO, industry or corporate compliance.

- **Share information** – Secure AutoVue Mobile Packs can be emailed or shared with supply chain partners for viewing, markup and collaboration. A simple click of a button bundles the Mobile Pack and attaches it to a new message in the default e-mail client.
- **View and review documents** – With AutoVue, recipients of the Mobile Pack can easily and efficiently view, markup and review documents. Reviewers have the necessary product information at hand, as well as the context of the documents, to make sound business decisions and provide timely feedback.
- **Capture and manage feedback and comments** – Markups, annotations and comments from multiple reviewers can be saved in the Mobile Pack. Markups captured in the Mobile Pack can be added back to the Content Management (CM), Product Lifecycle Management (PLM), Supply Chain Management (SCM) or Enterprise Resource Planning (ERP) solution, with a single click of a button, allowing supplier feedback to be fully integrated into the collaborative process. With AutoVue Mobile approvers can easily manage supplier feedback without having to track and consolidate multiple emailed copies of marked-up versions of the original file.

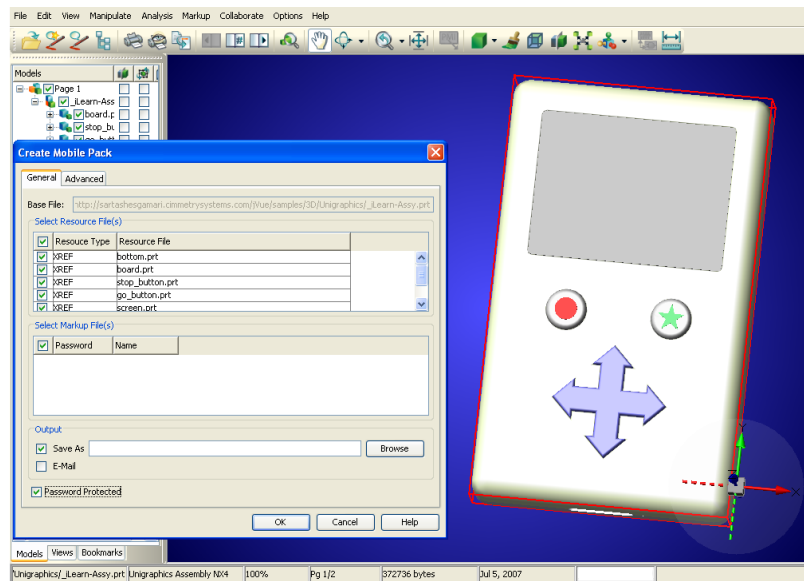


Figure1. AutoVue Mobile creates easy-to-share Mobile Packs

Enable Network Friendly Sharing of CAD Data

Sharing large CAD models with global teams and supply chain partners consumes a great deal of network bandwidth and puts tremendous strain on a company's IT infrastructure. AutoVue Mobile delivers a network friendly method of sharing large files with extended supply chains. Users can choose to include an AutoVue

streaming file in their Mobiles Packs, instead of original files, which greatly reduces the size of the Mobile Pack and facilitates transmission. By doing so, AutoVue Mobile provides an efficient solution for fast, secure and reliable transfer of CAD drawings and blueprints to extended teams, even over low-bandwidth networks.

Integrate Partners in your Workflow Process

Through the use of productivity features like IntelliStamp, organizations can allow partners to digitally sign and stamp Mobile Pack documents with pre-defined attributes from enterprise systems, extending the efficiency of internal business processes to supply chain partners.

Internal teams can create custom IntelliStamp “forms” that include specific metadata, document and user information pulled directly from the back-office system, and apply them to documents contained in Mobile Packs. Authorized reviewers can easily modify, add or delete these pre-defined attributes values directly from within IntelliStamp, and digitally sign-off Mobile Pack documents. Approvers can then easily update changes made by partners to the Mobile Pack back into the enterprise system, triggering further workflow actions, such as invoicing or time sheet generation, with a single click of a button. This way, organizations can improve business processes through workflow automation, while keeping absolute control on information provided by supply chain partners.

Collaborate without Risking Intellectual Property

One major challenge in today’s global market place is collaborating externally with outsourced partners while protecting a company’s intellectual property.

AutoVue Mobile delivers a robust set of security features and also leverages the security and permission settings of back-office systems, sharing with partners only the intended information. AutoVue Mobile’s automatic file encryption ensures files cannot be open in other applications, such as text editors. Users can also password protect Mobile Packs, add expiration dates, and define flexible document permissions and privileges that govern which data and attributes suppliers, customers and colleagues can view, modify, delete or add.

AutoVue Mobile also helps protect sensitive data by including an AutoVue streaming file in the Mobile Pack instead of the native file, ensuring that original CAD files are not distributed outside the company.

INTEGRATE WITH ENTERPRISE APPLICATIONS

ORACLE'S AUTOVUE ENTERPRISE VISUALIZATION PRODUCTS

The Web version of AutoVue products can be integrated into existing content management, product lifecycle management, or enterprise resource planning systems, as well as file servers or home-grown solutions. Integrated with existing enterprise systems, AutoVue connects information, people and processes, delivering anytime, anywhere access to vital information and maximizing business process efficiency.

Teams can better collaborate and make sound business decisions, driving innovation and operational efficiency.

RELATED PRODUCTS AND SERVICES:

- AutoVue 2D Professional
- AutoVue 3D Professional Advanced
- AutoVue EDA Professional
- AutoVue Electro-Mechanical Professional
- AutoVue Office
- AutoVue VueLink Integrations

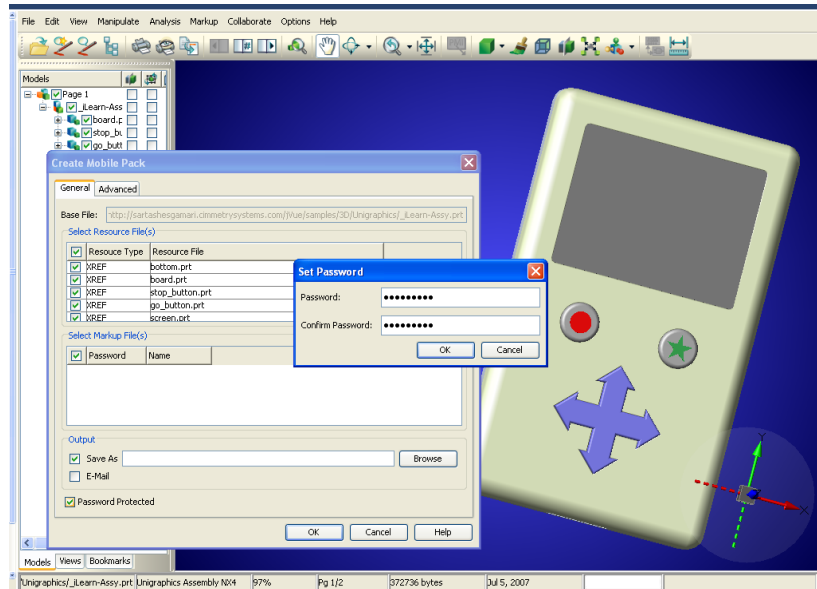


Figure2. AutoVue Mobile delivers a robust set of security features

Extend the Reach of Information to Disconnected Users

AutoVue Mobile adds support for offline collaboration, allowing remote workers or business travelers to take their work on site or on the road. Users can work on crucial information in a disconnected fashion, and have insight into the context surrounding the documents.

AutoVue Mobile is ideal for Maintenance Repair & Operations (MRO) activities, helping remote maintenance workers and field service employees to expedite maintenance operations and resolution by allowing complete access to key information, even when working off-line. Comments and changes in configuration can be easily documented using AutoVue's markup functions, saved in the Mobile Pack and updated in the back-office system when workers are back-online.

Contact Us

For more information about how your organization can leverage the power of Oracle's AutoVue Mobile, please visit oracle.com/applications/autovue or call +1.800.361.1904 or +1.514.735.3219 to speak to an Oracle representative.

Copyright © 2008, Oracle and/or its affiliates. All rights reserved.

This document is provided for information purposes only, and the contents hereof are subject to change without notice. This document is not warranted to be error-free, nor is it subject to any other warranties or conditions, whether expressed orally or implied in law, including implied warranties and conditions of merchantability or fitness for a particular purpose. We specifically disclaim any liability with respect to this document, and no contractual obligations are formed either directly or indirectly by this document. This document may not be reproduced or transmitted in any form or by any means, electronic or mechanical, for any purpose, without our prior written permission.

Oracle is a registered trademark of Oracle Corporation and/or its affiliates. Other names may be trademarks of their respective owners. 0408



2, Rue Galilée
78280 GUYANCOURT
Tél. 01.39.30.65.06
Fax. 01.39.30.65.08
www.cadvision.fr